

# More possibilities.

## With Layher scaffolding couplers

for use with steel and aluminium tube of 48.3 mm diameter

Scaffolding Couplers

Precision in detail. Maximum Safety.



**Double coupler**  
Nos. 4700.019, 4700.022;  
19 or 22 mm WS;  
acc. to EN 74 and approval  
Z 8.331.805; usable in the  
classes B/BB/AI-B;  
for right-angled connection.



**Reducing swivel  
coupler 48.3/33.7**  
Nos. 4738.019, 4738.022;  
angled connection of tube of dia.  
48.3 mm to tube of dia. 33.7 mm.



**Suspended scaffolding  
coupler**  
No. 4713.022\*;  
permissible loading 15.0 kN;  
for fixing suspended scaffold tube to  
flanges of I, T and U sections in  
conjunction with 2 safety hooks  
4714.000.



**Swivel coupler**  
Nos. 4702.019, 4702.022;  
acc. to EN 74 and  
approval Z 8.331.819  
for any angled connection.



**Reducing double  
coupler 60.3/48.3**  
No. 4744.022\*;  
right-angled connection of tube of  
dia. 48.3 mm to tube of dia. 60.3 mm.



**Safety hook for suspended  
scaffolding coupler**  
No. 4714.000\*;  
two of these hooks are used for  
securing No. 4713.022 to flanges  
of max. width 220 mm.



**Joint Coupler**  
Nos. 4703.019, 4703.022;  
acc. to EN 74; usable in Class B;  
for end-to-end connection of two  
tubes in conjunction with spring  
bolt 4739.000.



**Reducing swivel  
coupler 60.3/48.3**  
No. 4745.022\*;  
angled connection of tube of dia.  
48.3 mm to tube of dia. 60.3 mm.



**Lattice girder coupler**  
Nos. 4720.019, 4720.022\*;  
connection of bottom chord  
of system lattice girders  
to scaffolding standards.



**Spring bolt**  
(formerly EN spigot)  
No. 4739.000;  
acc. to EN 74; usable in Class B;  
alignment of tubes, transmission of  
compression forces. For end-to-end  
connection of two tubes in conjunction  
with end-to-end coupler 4703.022.



**Half coupler with  
toe board bolt**  
Nos. 4708.019, 4708.022;  
for toe board connection  
in special structures.



**Lattice girder coupler, long**  
No. 0708.228\*;  
19 mm WS;  
connection of bottom chord  
of non-system lattice girders  
to scaffolding standards.



**Half coupler with eye bolt**  
Nos. 4707.019, 4707.022;  
with approval Z 8.331.882;  
usable in the Classes B/AI-B;  
connection of non-system parts.



**Half coupler with hook**  
No. 4749.019, 19 mm WS;  
used for special anchoring  
arrangements. Enables  
longer wall anchors using  
scaffolding tube.



**Clamp coupler**  
Nos. 4716.019, 4716.022;  
clamp fixing of scaffold tube  
to flanges of I beams.  
Permissible loading 9.0 kN  
vertical or parallel to tube axis.



**Half coupler  
with plate**  
No. 4705.019\*;  
connection of wall panels  
to scaffolding tubes.



**Wedge half coupler**  
No. 4729.000;  
with approval Z 8.331.882;  
usable in the Classes A/AI-A;  
connection of non-system parts.



**Guardrail coupler  
with guardrail box**  
No. 1735.000;  
for connection of guardrails  
on the inside of a SpeedyScaf  
scaffold.



**Clamping half coupler  
with guardrail box**  
Nos. 4750.019\*, 4750.022\*;  
permissible loading 3.6 kN  
vertical to tube axis.



**Spigot with  
half coupler**  
Nos. 4706.019, 4706.022\*;  
for connection of Allround  
standards to lattice girders.



**Wedge double coupler**  
No. 4727.000\*;  
for secondary right-angled  
connections.



**Squared timber coupler**  
Nos. 4717.019, 4717.022;  
steel bracket for holding  
wood sections 10 x 12 cm.



**Combination coupler**  
No. 4711.019\*;  
connection of scaffolding  
tubes to wooden parts.



**Ratchet spanner  
with reinforced head**  
Nos. 4740.019, 4740.022;  
19 or 22 mm WS.



**Wedge swivel coupler**  
No. 4728.000\*;  
for secondary angled  
connections.



**Squared timber coupler,  
small**  
Nos. 4718.019, 4718.022;  
steel bracket for holding  
wood sections 8 x 8 cm.



**Anchor coupler  
for brackets**  
Nos. 4734.019\*, 4734.022\*;  
connection of scaffolding  
anchors to brackets.



**Scaffolding ratchet**  
No. 4726.019\*, 4726.022\*;  
19 or 22 mm WS.



**Parallel coupler**  
Nos. 0700.173\*, 0704.563\*;  
19 or 22 mm WS.



**Rigid wedge coupler**  
Nos. 2628.019, 2628.022;  
connection of tubes to  
rosette of Allround standards  
at right angles.



**Frame coupler**  
No. 4709.022;  
connector for suspended  
deck frames secured with  
a SpeedyScaf guardrail  
connection bolt.



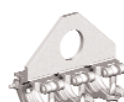
**Ratchet spanner**  
No. 4747.000;  
19 and 22 mm WS  
in one tool.



**Wedge spindle  
swivel coupler**  
No. 4735.000\*;  
connection of scaffolding tube  
to threaded spindle  
at any required angle.



**Wedge head swivel coupler**  
Nos. 2629.019, 2629.022;  
connection of tubes to  
rosette of Allround standards  
at any angle.



**Crane eyelet with  
3 half couplers**  
Nos. 0700.293\*; 22 mm WS;  
offsetting of roofs  
permissible loading 14.1 kN  
vertical and parallel  
to tube axis.



**Hammer**  
No. 4421.050\*;  
600 g, with steel tube handle.



**Reducing double  
coupler 48.3/33.7**  
Nos. 4737.019, 4737.022;  
right-angled connection of tube of  
dia. 48.3 mm to tube of dia. 33.7 mm.



**Twin wedge coupler**  
No. 2628.000;  
loading acc. to Z-8.22-64;  
connection of Allround  
standards with one another.



**Plate holder, long**  
No. 0701.558\*;  
connection of wall panels  
max. 13 mm thick,  
in Allround scaffolding.

\* only available ex works /  
on request

Current prices for Layher  
scaffolding couplers can be  
found in the Layher  
SpeedyScaf, Layher Allround  
or Layher Construction  
Accessories catalogues, or  
enquire with us.

Layher® 

Wilhelm Layher GmbH & Co. KG  
Scaffolding Grandstands Ladders

Ochsenbacher Straße 56  
74363 Gueglingen-Eibensbach  
Germany

Post Box 40  
D-74361 Gueglingen-Eibensbach  
Phone +49 7135 70-0  
Fax +49 7135 70-372  
E-mail [export@layher.com](mailto:export@layher.com)  
[www.layher.com](http://www.layher.com)